

2018

Product Catalogue

Section 8: Miscellaneous Equipment



Section 8: Miscellaneous Equipment

CONTENTS

| | |
|--|----|
| <i>Elk Trolley Skate</i> | 4 |
| <i>Rail Marking / Greasing Trolley</i> | 6 |
| <i>Tow Bars Links and Adapters</i> | 8 |
| <i>Lightweight Roller Beds</i> | 10 |

This document is one of a series of 10 catalogue sections which together give specifications for all the products in our range.

Other sections are available on request.

Section 1: Rail Handling

Section 2: Sleeper Handling

Section 3: Panel Handling

Section 4: Ballast and Trackbed

Section 5: Clipping and De-Clipping

Section 6: Signals and Crossings

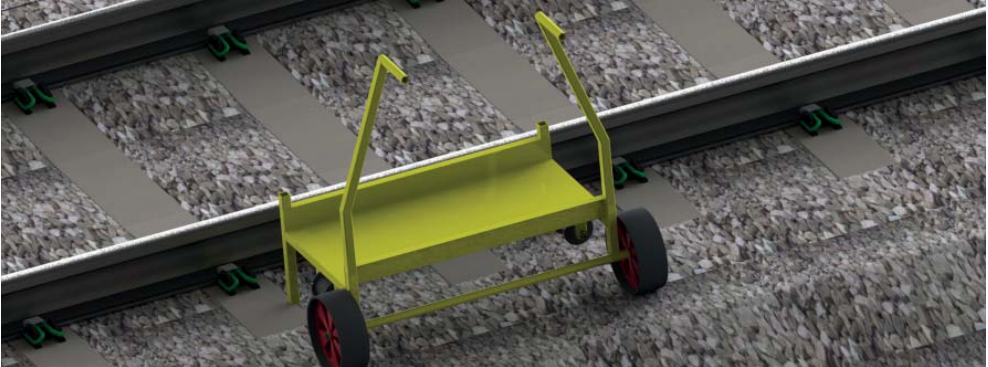
Section 7: Cable and Electrification

Section 8: Miscellaneous Equipment

Section 9: Barriers and Access

Section 10: Adapter Heads

8.1 ETS10 ELK TROLLEY SKATE

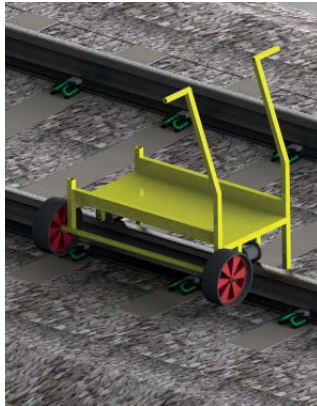


Carry your tools and equipment right from the van to the track and then along the line to the worksite on a single trolley - the Elk Trolley Skate.

On the rail the Elk Trolley Skate runs on hard nylon wheels with sealed ball races to make light work of propelling even the heaviest loads.

Off the rail the Elk Trolley Skate runs on either solid rubber or pneumatic tyres.

With removable handles this skate is easy to stow on a vehicle and the load tray is large enough to carry tools, bars, gas cylinders, etc.



FEATURES

- Strong and Robust
- Unique Road / Rail design
- Removable Handles
- Strong steel construction
- 250kg capacity
- Full Factory Parts Backup
- CE Marked

AN EXTREMELY USEFUL ADDITION TO ANY TRACK WORK GANG'S INVENTORY

SPECIFICATIONS

| | |
|---------------------------|--------|
| Weight | 24 kg |
| WLL (Safe Working Load) | 250 kg |
| Proof Load (Factory test) | 500 kg |

Wheels Plastic centre/urethane tyre

| | |
|-------------|--------------|
| Body Colour | 08E51 Yellow |
| Wheels | Red |

| | |
|--------------------------|--------|
| Deck Height (above rail) | 225 mm |
| Tray Width | 450mm |
| Tray Length | 900 mm |



BENEFITS

- Dual Purpose Device - road and rail
- Carry heavy tools and equipment right from the van to the job on one trolley
- Light and compact for transport



Specifications given may be subject to change due to our policy of continuous improvement

OPTIONS AND ORDERING INFORMATION

The ETS10 Elk Trolley Skate is available either with an open ended deck or a closed ended deck.

Both models feature removable handles, solid rubber tyred wheels and hard plastic rail wheels on ball bearing races.

A special version is also available with racking to hold 18 Instant Barrier Posts (see page 110).



Example: ETS10-01 Trolley Skate with open ended deck

PRODUCT ACCEPTANCE

No application has been made for Network Rail Product Acceptance in relation to this product

MODEL NUMBERS FOR ORDERING

When ordering this product please use the order code below to specify the correct model

ETS10-□□

| Trolley Skate Type | Code |
|--------------------------|------|
| <i>Open Ended Deck</i> | 01 |
| <i>Closed Ended Deck</i> | 02 |
| <i>For Barrier Posts</i> | 03 |

8.2 RMT13 RAIL MARKING / GREASING TROLLEY



The Thomson Rail Marking / Greasing Trolley is a unique device designed for painting a mark or applying grease along the head of the rail.

Track Lube is often necessary on tight radius curves to prevent excessive wheel flange wear. This device accurately applies grease exactly where it is needed without waste or hardship on the operator.

The device can also apply a paint line to the head of the rail to demarcate work zones or areas where particular hazards exist.



FEATURES

- Strong and robust
- Lightweight construction
- Adjustable for all can sizes
- Long life Delrin wheels
- Ball race wheel bearings
- Side push handle with spray control
- Quick to assemble and dismantle
- For spraying paint or grease
- Full Factory Parts Backup
- CE Marked

A QUICK AND EASY WAY TO MARK OUT WORK AREAS OR TO APPLY TRACK LUBE.

SPECIFICATIONS(TYPICAL)

| | |
|----------------------------|----------|
| Weight (complete unladen) | 12 kg |
| Weight (heaviest part) | 9.5kg |
| Load Capacity | 50 kg |
| Capacity (600ml Cans) | 24 cans |
| Handle Height (above rail) | 680 mm |
| O/A Width | 1,000 mm |
| O/A Length | 1,000 mm |
| O/A height (assembled) | 800 mm |

| | |
|-----------------|-----------------|
| Body Colour | Yellow |
| Construction | Aluminium Alloy |
| Usage | Paint / Grease |
| Min. can length | 120 mm |
| Max. can length | 350 mm* |

*note: longer cans can be accommodated using optional high capacity model.

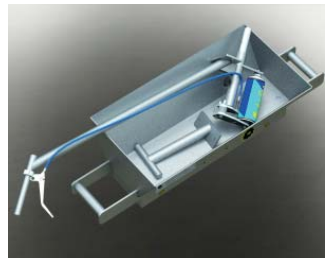
DOCUMENTATION

Operator's Manual
Parts Manual
Maintenance Plan
Certificate of Conformity
PADS No. 094/001800



BENEFITS

- Quick, Simple and Accurate
- Reliable, durable marking
- Accurate grease placement
- Reduced manpower requirement
- Clear demarcation of track zones



Specifications given may be subject to change due to our policy of continuous improvement

OPTIONS AND ORDERING INFORMATION

The RMT13 Rail Marking / Greasing Trolley is available in two models: standard and high capacity.

The frame and bin are powder coated in yellow, the handle and can holder in white.

Hard plastic rail wheels are fitted and these run on ball bearings.



PRODUCT ACCEPTANCE

This product has full Network Rail Product Acceptance under Certificate number 05/05945

Example: RMT13-01 Rail Marking / Greasing Trolley

MODEL NUMBERS FOR ORDERING

When ordering this product please use order code

RMT13-□□

| Body Type | Code |
|----------------------|------|
| <i>Standard</i> | 01 |
| <i>High Capacity</i> | 02 |

8.3 TB14 TOW BARS, LINKS AND ADAPTERS



Thomson Tow Bars are made to order allowing us to custom make tow bars to your specifications.

Our standard design is a 2m long bar with forged eyes welded to a high tensile steel centre bar however, custom built tow bars for special purposes are frequently produced.

Extra features such as pipe and cable brackets can easily be accommodated and special light-weight designs and extra long lengths are available.

The specifications on this page are for our standard tow bar. Please contact us for other options.



FEATURES

- Strong and Robust
- Custom designs available
- Forged eyes
- All Steel Welded Construction
- High Resistance to Dynamic Loads
- High Resistance to Abuse
- CE Marked

HIGH STRENGTH AND ECONOMICAL TOW BAR FOR EMERGENCY RECOVERY AND GENERAL APPLICATIONS

SPECIFICATIONS (STD.)

| | |
|---------------------------|---------------|
| Weight | 42 kg |
| Finish | Powder Coated |
| Length (pin centres) | 2,000mm |
| Max. Tow Force | 160 kN |
| Proof Load (Factory Test) | 200 kN |

Options available include:

- Lightweight construction
- Cranked design
- Hose and cable mounts
- Carrying handles
- Adapter links
- Stowage brackets

DOCUMENTATION

Test Certificate

Design Validation Report (if required)



BENEFITS

Standard and Custom designs to suit your exact requirements

Full technical documentation and test reports available



OPTIONS AND ORDERING INFORMATION

Thomson TB14 Tow Bars come in two basic designs: solid centre bars and lighter tubular bars.

Forged towing eyes are fitted to both ends of standard tow-bars and both designs meet the requirements of RIS1530-plt for emergency recovery use.

Tow bars are available in lengths from 1m to 5m.



Example: TB14-01-02 Solid Bar Tow-bar 2m long

PRODUCT ACCEPTANCE

This product is designed to RIS1530-plt but, due to the wide variance of designs, has not been presented for Network Rail Product Acceptance

MODEL NUMBERS FOR ORDERING

When ordering this product please use the ordering code below to specify the correct options

TB14-□□-□□-□

| Construction | Code |
|--------------------------|------|
| <i>Solid Bar</i> | 01 |
| <i>Round Tubular Bar</i> | 02 |

| Length | Code |
|-----------|------|
| <i>1m</i> | 01 |
| <i>2m</i> | 02 |
| <i>3m</i> | 03 |
| <i>4m</i> | 04 |
| <i>5m</i> | 05 |

| Documentation | Code |
|-------------------------------|------|
| <i>Certificates only</i> | A |
| <i>Full Design Validation</i> | B |

NOTE

Non-standard configurations such as linked ends and tow-bars with different end fittings are available to special order

Please contact the factory for further details

8.4 RB11 LIGHTWEIGHT ROLLER BEDS



Lightweight roller beds are the solution to moving loads in tunnels, on platforms and in other areas where access is too restricted for machines.

Two sizes are available, single and double roller width. Both feature a high strength, high rigidity aluminium alloy space frame with removable rollers.

The rollers have thick walled aluminium outer tubes running on sealed for life ball races and high tensile steel tubular shafts. The result is a low friction, high capacity roller set.



FEATURES

- Light and compact
- Rollers removable for further weight reduction
- High load capacity
- Low friction
- All Aluminium Welded Construction frame
- High Resistance to Dynamic Loads
- High Resistance to Abuse
- CE Marked

A ROBUST, SAFE AND RELIABLE SYSTEM FOR MOVING LOADS OF ALL TYPES

SPECIFICATIONS (STD.)

| | |
|--------------------|----------|
| Weight (Double) | 49 kg |
| Weight (Single) | 29 kg |
| WLL | 2,000 kg |
| Proof Load | 3,000 kg |
| O/A Height | 215 mm |
| O/A Width (Single) | 510 mm |
| O/A Width (Double) | 970 mm |
| O/A Length | 2020 mm |

- TIG welded aluminium construction
- Removable rollers
- CAE refined design
- Low Friction sealed ball races
- Aluminum rollers with steel shafts

DOCUMENTATION

Certificate of Conformity

Load Test Certificate (if specified with order)



BENEFITS

- High Strength, Light Weight
- Easy to transport and carry
- Fits 4-foot
- Single and Double width available



Specifications given may be subject to change due to our policy of continuous improvement

OPTIONS AND ORDERING INFORMATION

Thomson RB11 Roller Beds can be supplied in a plain or a powder coated finish.

Two widths are available: single roller and double roller.

If requested at time of order a load test certificate can be supplied.



Example: RB11-01-01 Single Width Roller Bed in Plain finish

PRODUCT ACCEPTANCE

This product has not been presented for Product Acceptance

MODEL NUMBERS FOR ORDERING

When ordering a RB11 Roller Beds please use the order code below to specify the correct options.

RB11-□□-□□-□

| Bed Type | Code |
|--------------|------|
| Single Width | 01 |
| Double Width | 02 |

| Finish | Code |
|---------------|------|
| Plain | 01 |
| Powder Coated | 02 |

| Documentation | Code |
|-------------------|------|
| Standard | A |
| + Load Test Cert. | B |

Please enquire for further details to:

Thomson Engineering Design Ltd

Valley Road
Cinderford
Gloucestershire UK
GL14 2NZ

Tel: +44 1594 82 66 11 Fax: +44 1594 82 55 60

Email: sales@thomsondesignuk.com

Web: www.thomsondesignuk.com

For technical enquiries please contact: technical@thomsondesignuk.com



All Thomson Engineering Design Products are proudly
designed and manufactured in the United Kingdom