

2018

Product Catalogue

Section 7: Cable & Electrification



*Thomson Engineering Design Ltd. Valley Road, Cinderford, Gloucestershire. GL14 2NZ
Tel: +44 (0)1594 82 66 11 Fax: +44 (0)1594 82 55 60 E-mail: sales@thomsondesignuk.com*

Section 7: Cable & Electrification

CONTENTS

<i>Cable Handling Yoke</i>	4
<i>Dual Cable Handling Yoke</i>	6
<i>Cable Thimbles</i>	8
<i>Steel Section Manipulator</i>	10
<i>Tube Pile Handler</i>	12
<i>Stovepipe Lifter</i>	14
<i>Delivery Stillages</i>	16

PRODUCTS FOR ROAD HAULAGE

<i>Cable Handling Yoke</i>	4
----------------------------	---

This document is one of a series of 10 catalogue sections which together give specifications for all the products in our range.

Other sections are available on request.

Section 1: Rail Handling

Section 2: Sleeper Handling

Section 3: Panel Handling

Section 4: Ballast and Trackbed

Section 5: Clipping and De-Clipping

Section 6: Signals and Crossings

Section 7: Cable and Electrification

Section 8: Miscellaneous Equipment

Section 9: Barriers and Access

Section 10: Adapter Heads

7.1 CHY10 CABLE HANDLING YOKE



The Thomson Cable Handling Yoke is the most efficient way to handle cable drums and to lay cable using an excavator crane.

By withdrawing two retaining pins the drum shaft is released from the Yoke.

Fit the drum shaft to the cable drum and pick it up with the Yoke. Lock the retaining pins and you are ready to lay the cable.

The Yoke can even be fitted with a hydraulic rotator to help position the drum when used just for drum handling. Can be made to suit any range of drum sizes and weights.



Rotator Version

SPECIFICATIONS (STD.)

Weight (typical)	145 kg
Shaft Diameter	80 mm
Max. Drum Width	1,200 mm
WWL (Safe Working Load)	3,000 kg
Proof Load (Factory Test)	6,000 kg

Max. Hyd. Pressure	210 Bar
Min. Hyd. Pressure	50 Bar

Body Colour 08E51 Yellow

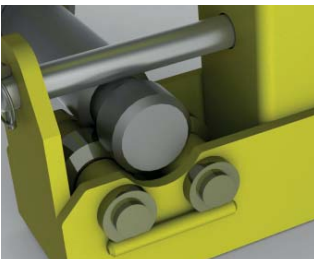
FEATURES

- Strong and Robust
- Very quick and simple to use
- All Steel Welded Construction
- High Resistance to Dynamic Loads
- High Resistance to Abuse
- Versions for any range of drum sizes and weights can be supplied
- 3,000 kg WLL
- 6,000 kg Proof Load
- Full Factory Parts Backup
- CE Marked

A REALLY EASY TO USE AND QUICK SOLUTION TO CABLE LAYING

DOCUMENTATION

- Operator's Manual
- Parts Manual
- Maintenance Plan
- LOLER Test Certificate



BENEFITS

- Minimises handling time
- Maximises productivity
- High reliability through robust construction



Specifications given may be subject to change due to our policy of continuous improvement

OPTIONS AND ORDERING INFORMATION

The CHY10 Cable Handling Yoke comes in two standard sizes but can be made to any other size as a special order.

Size 01 can cope with drums up to 1.8m diameter x 1m wide and weighing up to 2 tonnes.

Size 02 can cope with drums up to 2.4m diameter x 1.5m wide weighing up to 4.5 tonnes



Example: CHY10-02-01 Cable Yoke for 2.4m diameter x 1.5m wide drums with one shaft and collar set

PRODUCT ACCEPTANCE

No application has been made for Product Acceptance in respect of this product.

MODEL NUMBERS FOR ORDERING

When ordering this product please use the ordering code below to specify the correct options

CHY10-□□-□□-□

Capacity	Code
Size 01 (1.8m x 1.0m)	01
Size 02 (2.4m x 1.5m)	02
Custom Size	03

No. of Shaft Assemblies	Code
1 Shaft and Collar set	01
2 Shaft and Collar sets	02

Etc.

Mounting	Code
Shackle for hook	S
Rotator and adapter	R

NOTE

When ordering custom sized Cable Yokes please specify the maximum dimensions and weight of the drums to be handled together with the required drum shaft diameter

NOTE

When ordering Cable Yokes with rotator please see Section 10 for details of adapter heads

7.2 CY16 DUAL CABLE HANDLING YOKE

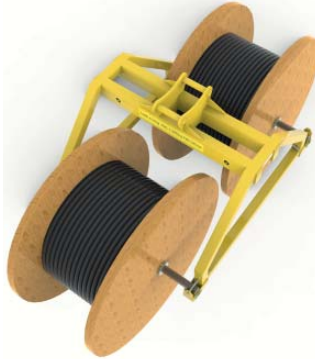


The Thomson CY16 Dual Cable Handling Yoke is a rapid, simple and efficient way to handle cable drums and to lay cable using an excavator or RRV.

By withdrawing two retaining pins the drum shaft is released from the Dual Yoke.

Fit the drum shaft to the cable drum and pick it up with the Dual Yoke. Lock the retaining pins and you are ready to lay the cable.

The Dual Yoke is supplied with free running shafts as standard but can also be supplied with braked shafts for tensioning cables as they are laid.



FEATURES

- Strong and Robust
- Very quick and simple to use
- All Steel Welded Construction
- High Resistance to Dynamic Loads
- High Resistance to Abuse
- Versions for any range of drum sizes and weights can be supplied
- 3,000 kg WLL
- 6,000 kg Proof Load
- Full Factory Parts Backup
- CE Marked

A REALLY EASY TO USE AND QUICK SOLUTION TO CABLE LAYING

SPECIFICATIONS (STD.)

Weight (typical)	750 kg
Shaft Diameter	80 mm
Max. Drum Width	1,400 mm
Max Drum Diameter	2,000 mm
WWL (Safe Working Load)	3,000 kg
WWL per drum	1,500 kg
Proof Load (Factory Test)	6,000 kg

Body Colour 08E51 Yellow

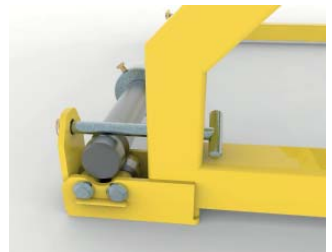
DOCUMENTATION

Operator's Manual
Parts Manual
Maintenance Plan
LOLER Test Certificate



BENEFITS

- Minimises handling time
- Maximises productivity
- High reliability through robust construction



Specifications given may be subject to change due to our policy of continuous improvement

OPTIONS AND ORDERING INFORMATION

The CHY16 Dual Cable Handling Yoke comes in either free running or braked versions.

Both versions can cope with drums up to 2.0m diameter and 1.4m wide.

As standard the device is fitted with 80mm shafts but other sizes may be specified as required.



Example: CY16-01-01 Dual Cable Yoke with one set of 80mm free running shafts

PRODUCT ACCEPTANCE

No application has been made for Product Acceptance in respect of this product.

MODEL NUMBERS FOR ORDERING

When ordering this product please use the ordering code below to specify the correct options

CY16-□□-□□

Shaft Type	Code
Free running 80mm shafts	01
Braked 80mm shafts	02
Custom specification	03

No. of Shaft Assemblies	Code
1 Shaft and Collar set	01
2 Shaft and Collar sets	02

Etc.

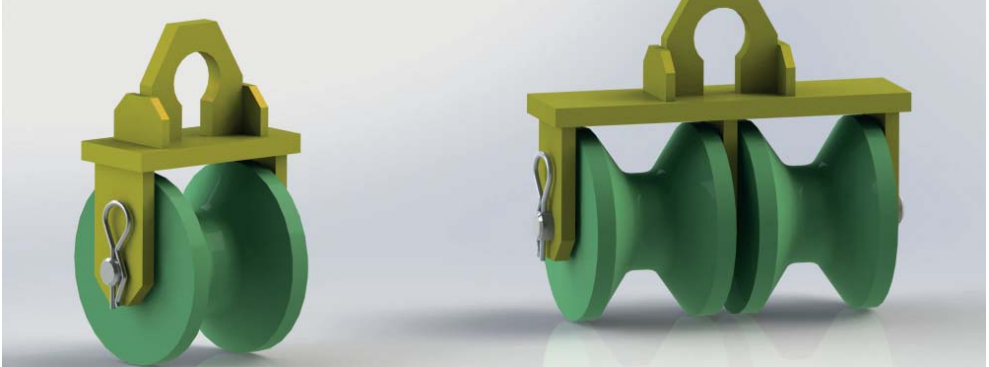
NOTE

When ordering custom sized cable yokes please specify the maximum dimensions and weight of the drums to be handled together with the required drum shaft diameter

NOTE

When ordering this product we will need to know the adapter head dimensions for a Type 04 Adapter Head (See Section 10)

7.3 CT06 CABLE THIMBLES



Thompson Cable Thimbles are designed to be suspended from the lifting hook of an excavator crane to guide the cable off the drum.

A soft polyurethane roller running on low friction bearings ensures that the cable is carefully handled.

To disconnect the thimble without cutting the cable the roller can be easily removed from the frame.

Single, twin and multiple roller versions are available to order.



FEATURES

- Strong and Light
- Designed to protect cable
- Soft urethane rollers
- 30 kg WLL
- 45 kg Proof Load
- Full Factory Parts Backup
- CE Marked

A SIMPLE WAY TO REDUCE THE HARD WORK OF CABLE INSTALLATION

SPECIFICATIONS

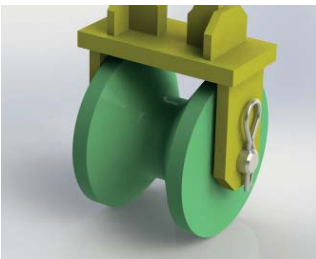
Weight (Single)	11 kg
Weight (Twin)	14 kg
WLL (Safe Working Load /cable)	30 kg
Proof Load (Factory Test)	45 kg

APPLICATIONS

Signal Cables
Optical Fibre Cables
Power Cables

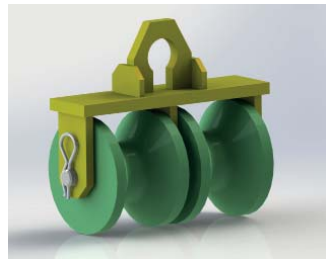
DOCUMENTATION

Operator's / Maintenance Manual
LOLER Test Certificate



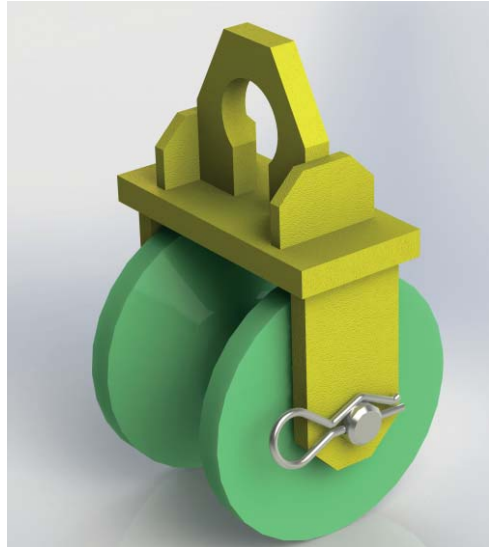
BENEFITS

- Fully certificated and tested
- Simple to use
- Light weight
- Low rolling resistance



OPTIONS AND ORDERING INFORMATION

The CT06 Cable Thimble is available in single reel and twin reel versions.



Example: CT06-01 Single Cable Reel

PRODUCT ACCEPTANCE

This product is loose lifting tackle and Product Acceptance is not therefore required

MODEL NUMBERS FOR ORDERING

When ordering this product please use the ordering code below to specify the correct options

CT06-□□

Type	Code
Single Reel	01
Twin Reel	02
Multiple Reels	03

NOTE

When ordering Cable Thimbles with multiple reels please state the number of reels required

7.4 SM15 STEEL SECTION MANIPULATOR



The SM15-01 is purpose designed for the handling, erection and installation of steel masts for track electrification.

Combining a scissor grab with hydraulically telescoping legs, the load is gripped on all four faces using soft urethane pads preventing damage to galvanised surfaces.

High grip force ensures safe handling and a roto-tilt adapter head allows precise positioning for accurate placement onto bolted flanges, tube piles, etc.

A unique pendulum valve which can only be overridden by the banksman from outside the cab ensures safety.

SPECIFICATIONS

Weight (typical)	1,400 kg
WLL (Safe Working Load)	3,750 kg
Min. Load Section	200mm x 200mm
Max. Load Section	650mm x 650mm
Head Tilt	+/- 30 degrees
Application:	Square, Rectangular I-Beam & Fabricated Sections



Rotator Circuit

Max. Hyd. Pressure	120 Bar
Min. Hyd. Pressure	90 Bar

Grab Circuit

Max. Hyd. Pressure	210 Bar
Min. Hyd. Pressure	110 Bar

Tilt Circuit

Max. Hyd. Pressure	210 Bar
Min. Hyd. Pressure	90 Bar

Body Colour	08E51 Yellow
Moving Parts	Signal Red

BENEFITS

- Higher output
- Improved Safety
- Precision Installation
- Dual-Man load release



FEATURES

- Powered rotation in all directions
- Dual man pendulum safety release
- Soft contact pads
- High grip force
- High torque worm rotator
- Dual cylinder tilt function
- Check valves on all grip cylinders
- Single man operation in horizontal position for easy mast selection
- Full Factory Parts Backup
- CE Marked
- LOLER certificate supplied

A FAST, SAFE AND EASY WAY TO INSTALL STEEL MASTS ONTO PILES AND BOLTED BASES

DOCUMENTATION

- Operator's Manual
- Parts Manual
- Maintenance Plan
- Factory Test Certificate
- LOLER Certificate



OPTIONS AND ORDERING INFORMATION

The SM15 Steel Section Manipulator is available in three configurations.

- A hydraulic rotator and 60 degree tilt head.
- A hydraulic rotator and 30 degree tilt head.
- A fixed head configuration for use with tilt rotators.
- A transport / storage stillage is also available for this product.



Example: SM15-01-02 Steel Section Manipulator with 60° Tilt Head and Transport / Storage Stillage

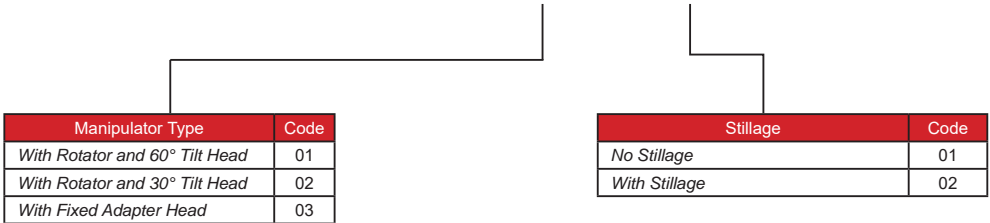
PRODUCT ACCEPTANCE

Product Acceptance has been applied for and is currently operating under trial Certificate number PA05/06553

MODEL NUMBERS FOR ORDERING

When ordering this product please use the ordering code below to specify the correct options

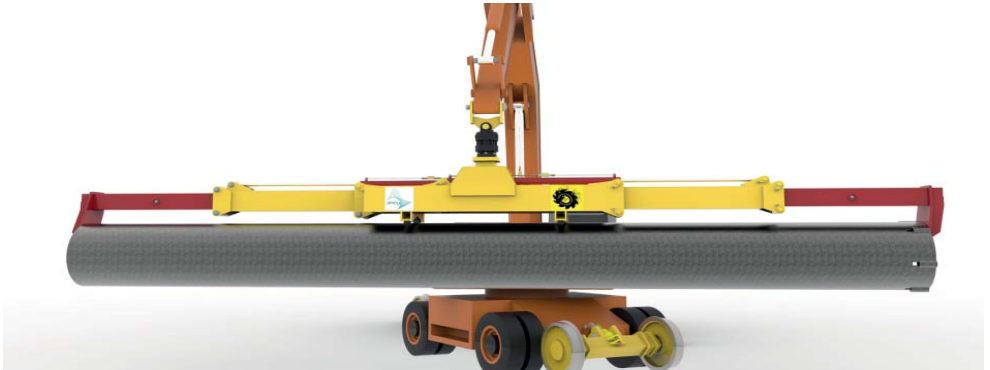
SM15-□□-□□



NOTE

When ordering this product we will need to know the adapter head dimensions for a Type 04 Adapter Head (See Section 10)

7.5 TPH16 TUBE PILE HANDLER



Thomson Tube Pile Handlers are designed for loading, unloading, handling and stacking of tube piles from 3m to 8m in length.

As standard the device incorporates a load levelling function and a heavy duty rotator for simple, safe operation.

Supplied with a custom made transport stillage and an adapter head to suit your host machine this attachment is ready to use on delivery.

The Tube Pile Handler removes the need for men to climb onto the stack of piles to attach or detach chains improving speed and safety.



FEATURES

- Strong and Robust
- Load Levelling feature
- Heavy Duty Rotator
- Full Range of Adapter Heads
- All Steel Welded Construction
- High Resistance to Dynamic Loads
- High Resistance to Abuse
- CE Marked

RAPID, SAFE AND ECONOMICAL WAY OF HANDLING STEEL TUBE PILES IN YARDS AND ON WORK SITES

SPECIFICATIONS (STD.)

Weight	2,250 kg
WLL (Safe Working Load)	2,500 kg
Finish	Powder Coated
Max. Pile Length	8 m
Min. Pile Length	3 m

Max. Hyd. Pressure	210 Bar
Min. Hyd. Pressure	90 Bar

Body Colour	08E51 Yellow
Moving Parts	Signal Red

DOCUMENTATION

LOLER Test Certificate
Operating and Maintenance Instructions



BENEFITS

Standard and Custom designs to suit your exact requirements

Full technical documentation and test reports available



Specifications given may be subject to change due to our policy of continuous improvement

OPTIONS AND ORDERING INFORMATION

The TPH16 Tube Pile Handler comes with a transport / storage stillage as standard.

This product is available with our full range of adapter head systems.

Automatic changeover from grab function to load levelling function is fitted as standard.



Example: TPH16-04 Tube Pile Handler with stillage, rotator and two-pin adapter head

PRODUCT ACCEPTANCE

This product is intended for use in handling yards and no application has been made for Product Acceptance

MODEL NUMBERS FOR ORDERING

When ordering this product please use the ordering code below to specify the correct options

TPH16-□□

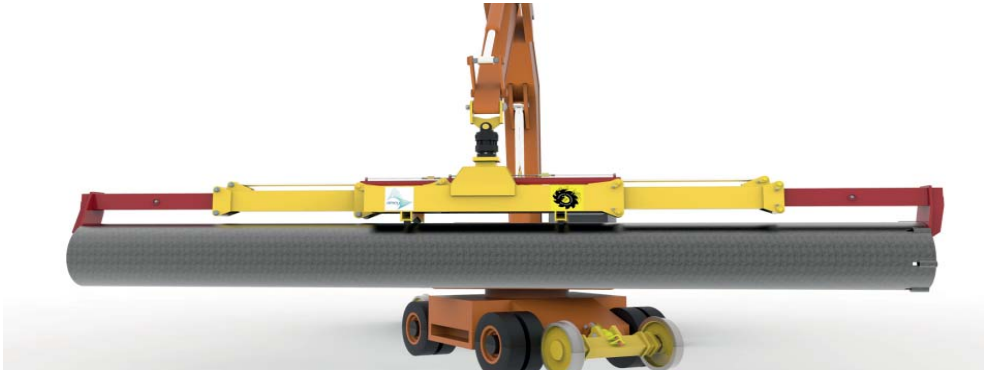
Adapter Type	Code
<i>Pile Handler with flange only</i>	00
<i>Fixed head for swivel hook</i>	01
<i>Swivel head for fixed hook</i>	02
<i>Rotator + 1 pin head</i>	03
<i>Rotator + 2 pin head</i>	04
<i>Archimedes / QC adapter head</i>	05
<i>Rotator + truck crane adapter</i>	06
<i>Special Adapter</i>	07

NOTE

When ordering adapter heads we will need to know the dimensions of your host machine.

Please see Section 10 for details of the dimensions we require for each type of adapter head.

7.6 TPH16 TUBE PILE HANDLER



Thomson Tube Pile Handlers are designed for loading, unloading, handling and stacking of tube piles from 3m to 8m in length.

As standard the device incorporates a load levelling function and a heavy duty rotator for simple, safe operation.

Supplied with a custom made transport stillage and an adapter head to suit your host machine this attachment is ready to use on delivery.

The Tube Pile Handler removes the need for men to climb onto the stack of piles to attach or detach chains improving speed and safety.



FEATURES

- Strong and Robust
- Load Levelling feature
- Heavy Duty Rotator
- Full Range of Adapter Heads
- All Steel Welded Construction
- High Resistance to Dynamic Loads
- High Resistance to Abuse
- CE Marked

RAPID, SAFE AND ECONOMICAL WAY OF HANDLING STEEL TUBE PILES IN YARDS AND ON WORK SITES

SPECIFICATIONS (STD.)

Weight	2,250 kg
WLL (Safe Working Load)	2,500 kg
Finish	Powder Coated
Max. Pile Length	8 m
Min. Pile Length	3 m

Max. Hyd. Pressure	210 Bar
Min. Hyd. Pressure	90 Bar

Body Colour	08E51 Yellow
Moving Parts	Signal Red

DOCUMENTATION

LOLER Test Certificate
Operating and Maintenance Instructions



BENEFITS

Standard and Custom designs to suit your exact requirements

Full technical documentation and test reports available



Specifications given may be subject to change due to our policy of continuous improvement

OPTIONS AND ORDERING INFORMATION

The TPH16 Tube Pile Handler comes with a transport / storage stillage as standard.

This product is available with our full range of adapter head systems.

Automatic changeover from grab function to load levelling function is fitted as standard.



Example: TPH16-04 Tube Pile Handler with stillage, rotator and two-pin adapter head

PRODUCT ACCEPTANCE

This product is intended for use in handling yards and no application has been made for Product Acceptance

MODEL NUMBERS FOR ORDERING

When ordering this product please use the ordering code below to specify the correct options

TPH16-□□

Adapter Type	Code
<i>Pile Handler with flange only</i>	00
<i>Fixed head for swivel hook</i>	01
<i>Swivel head for fixed hook</i>	02
<i>Rotator + 1 pin head</i>	03
<i>Rotator + 2 pin head</i>	04
<i>Archimedes / QC adapter head</i>	05
<i>Rotator + truck crane adapter</i>	06
<i>Special Adapter</i>	07

NOTE

When ordering adapter heads we will need to know the dimensions of your host machine.

Please see Section 10 for details of the dimensions we require for each type of adapter head.

7.7 TDS16 DELIVERY STILLAGES



Thomson Engineering Design manufactures a range of specialised stillages for storing and transporting electrification components.

Stillages are made to order so we can tailor the design to your exact requirements.

Unique urethane linings can be fitted to eliminate the risk of damage to surface coatings.

Stillages can be made to ISO container dimensions or custom dimensions.



FEATURES

- Strong and Robust
- Custom Designs
- Full Documentation
- All Steel Welded Construction
- High Resistance to Dynamic Loads
- High Resistance to Abuse
- CE Marked

ECONOMICAL SOLUTION TO MATERIALS HANDLING

SPECIFICATIONS (MAX.)

Weight	4,000 kg
WLL (Safe Working Load)	15,000 kg
Finish	Powder Coated
Max Length	6 m
Max Height	2.5m

Standard Colour 08E51 Yellow

DOCUMENTATION

Load Test Certificate
Operating and Maintenance Instructions
PADS No. 094/016209

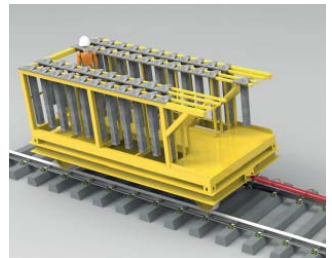


BENEFITS

Standard and Custom designs to suit your exact requirements

Range of accessories available

Full technical documentation and design reports available



Specifications given may be subject to change due to our policy of continuous improvement

OPTIONS AND ORDERING INFORMATION

Thomson TDS16 delivery stillages are designed to fit either ISO twist lock or Philmor trailer twist lock locations.

The standard stillage is specifically designed for the haulage and delivery of electrification mast fabrications. It incorporates urethane padding and tie down points to prevent damage to galvanised masts and components.

Additional equipment can be specified to adapt the stillage for carrying cantilevers.



Example: TDS16-01 Standard Mast Stillage for Philmor Trailers

PRODUCT ACCEPTANCE

Electrification Mast Stillage has been granted full Network Rail Product Acceptance under Certificate number PA05/06355

MODEL NUMBERS FOR ORDERING

When ordering this product please use the ordering code below to specify the correct options

TDS16-□□

Fitting	Code
<i>Philmor Trailer</i>	01
<i>ISO Twist Locks</i>	02
<i>Custom Size</i>	03

NOTE

Please contact the factory for details of optional extra equipment.



Thomson rail products are used throughout the world and trusted for safety, versatility and strength.

A significant part of our business involves the design and manufacture of specialised handling devices. Please enquire for details of our design and build service.

All of our products have been designed and built under our ISO 9001:2008 approved quality assurance scheme.

Please enquire for further details to:

Thomson Engineering Design Ltd

Valley Road
Cinderford
Gloucestershire UK
GL14 2NZ

Tel: +44 1594 82 66 11 Fax: +44 1594 82 55 60

Email: sales@thomsondesignuk.com

Web: www.thomsondesignuk.com

For technical enquiries please contact: technical@thomsondesignuk.com



All Thomson Engineering Design Products are proudly designed and manufactured in the United Kingdom