



## [PE-100 SERIES] PITBULL™ UTILITY CRANE

### DESIGNED AND BUILT TO LAST

A compact lightweight versatile crane with robust design, mounted to above and below ground light delivery vehicles and equipment. This unit is designed with a Load-and-Assist protocol. The PE100 Series Utility Crane performs lifts in tight confines, employed in sectors where manoeuvrability and reach are important considerations.

New regulations disallow man handling of loads with excessive weights.

**BUILT TOUGH. ENGINEERED TO LAST.**

## TECHNICAL DATA : SPECIFICATIONS SHEET

Unit weight:	195 Kg
Load Lifting capacity:	(Refer to load diagram)
Lifting moment:	1 Ton-meter
Operating pressure:	115 Bar
Minimum reach:	750mm
Hydraulic telescopic extension:	1 150 mm
Height in folded position:	885 mm
Hydraulic slew angle:	360 Degrees.
Recommended oil flow:	10 Litres p.m.
Power pack driven.	✓
Overload protection.	✓
Load lock.	✓

### SAFETY FEATURES:

Hose failure valves on cylinders.

Main relief valve.

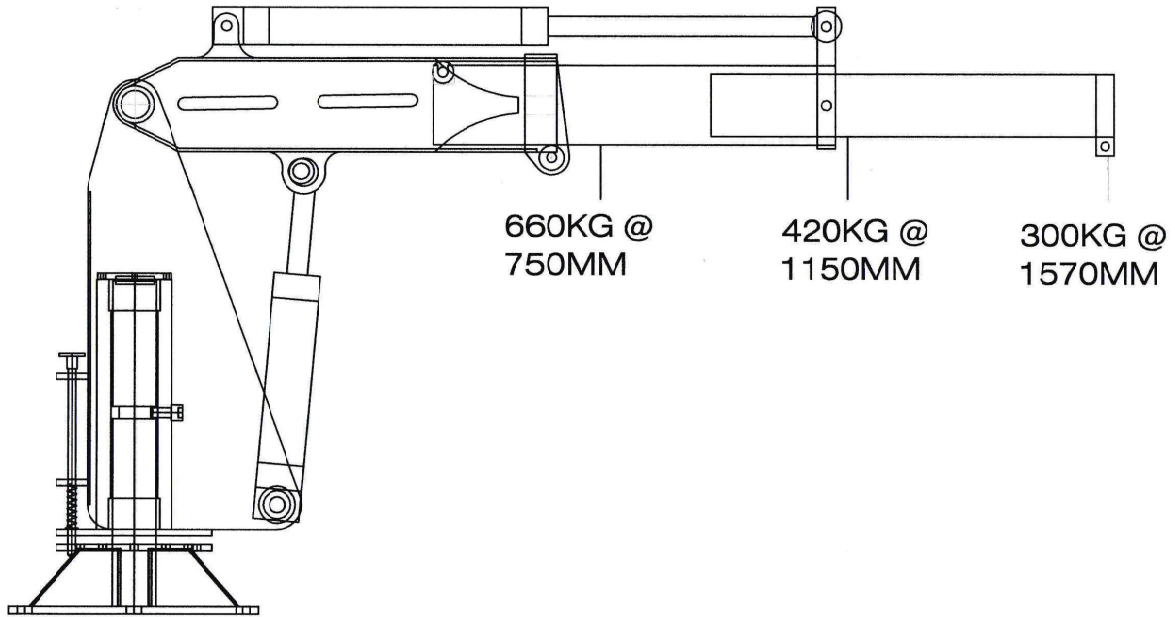
Port relief valves per function.

## QUALITY | PRECISION | PERFORMANCE



12 Month Warranty on all structural and hydraulic components.\*

## LOAD DISPLACEMENT



FITTED TO BOTH BELOW AND ABOVE GROUND GENERAL PURPOSE VEHICLES.





DEDICATION TO QUALITY, SAFETY, INCREASED PRODUCTIVITY AND INNOVATION IS OUR COMMITMENT, AND YOUR GUARANTEE.

