



[PERWJ-6000 SERIES] PITBULL™ JIB CRANE

RELIABLE SOLUTIONS TO WEIGHTY REQUIREMENTS

A UNIVERSAL HEAVY-LIFT MOBILE CRANE ATTACHMENT.

The Pitbull™ RWJ 6000 is a robust, safe, custom built jib crane with an extendable boom capable of lifting 6 000 kg.

Turnkey design and engineering allows this unit to be up-lifted by underground LHD's, manoeuvred into position to execute well controlled safe load and transfer operation.

The advantage of this unique product is that it is a detachable unit, without compromise to SAFETY.

This accessory frees up the underground LHD to perform other operations as well.

Safe heavy lifting - on demand - as required.

BUILT TOUGH. ENGINEERED TO LAST.

TECHNICAL DATA : SPECIFICATIONS SHEET

Unit weight:	1 425 Kg
Load Lifting capacity:	6 000 Kg
Operating pressure:	60 Bar
Required flow:	15 Litres p.m.
Composition:	All steels ISO certified.
Hydraulic extension.	✓
Hydraulic reset function.	✓
Overload protection.	✓
Quick Release Attachment.	✓

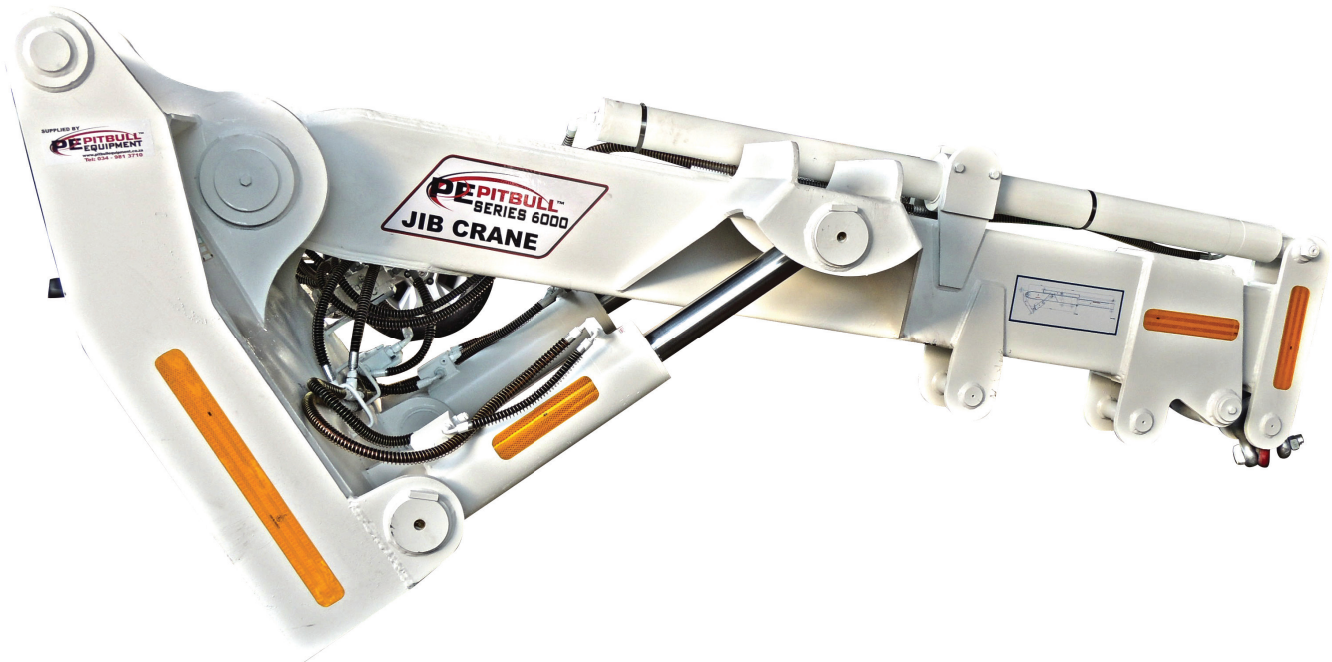
SAFETY FEATURES:

Hose failure valves on cylinders.

Main relief valve.

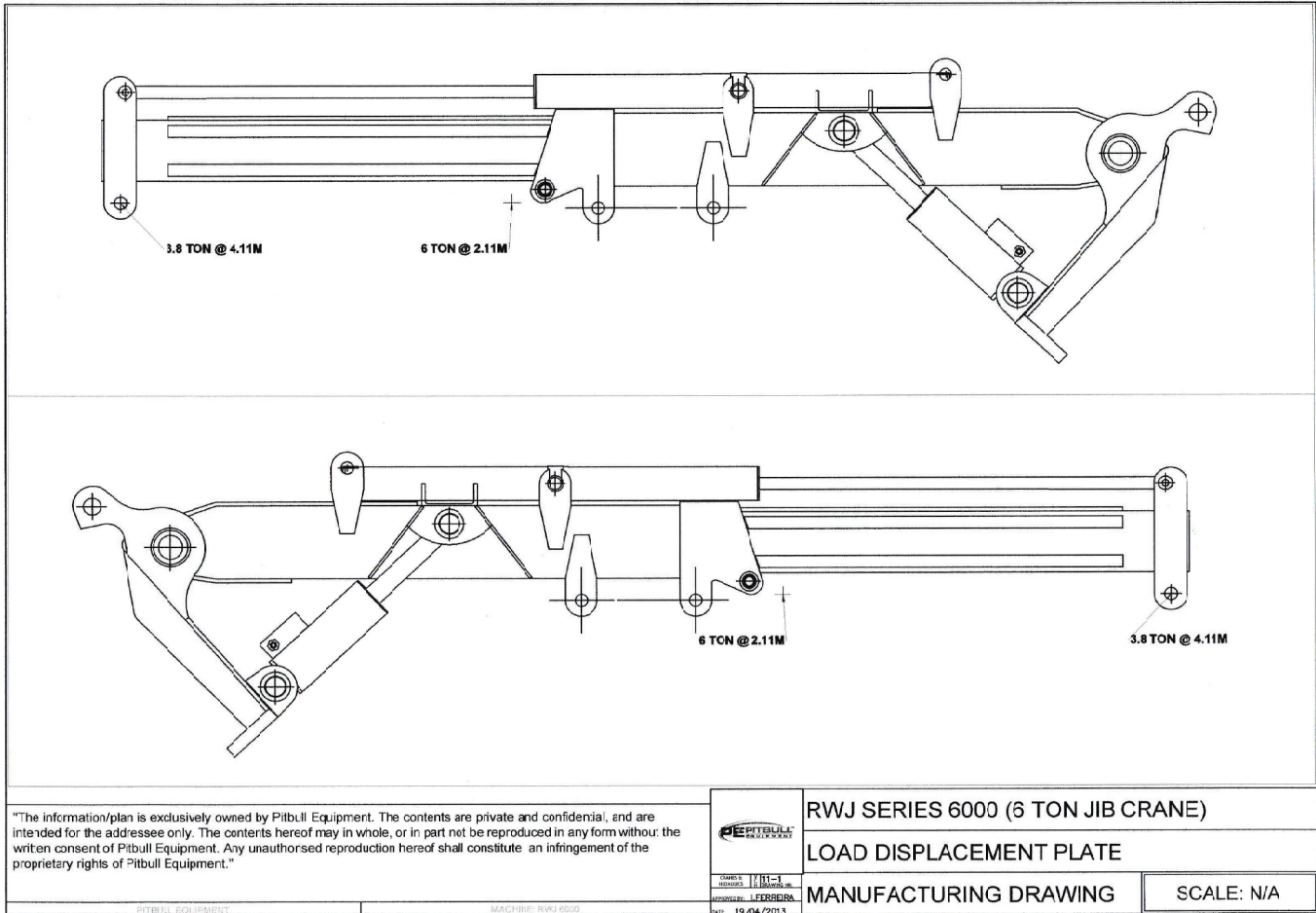
Port relief valves per function.

QUALITY | PRECISION | PERFORMANCE

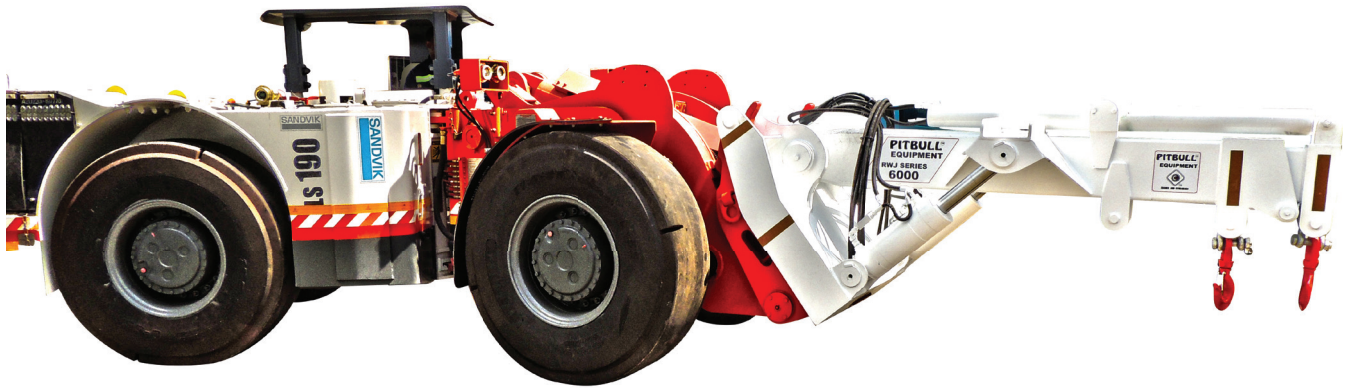


12 Month Warranty on all structural and hydraulic components.*

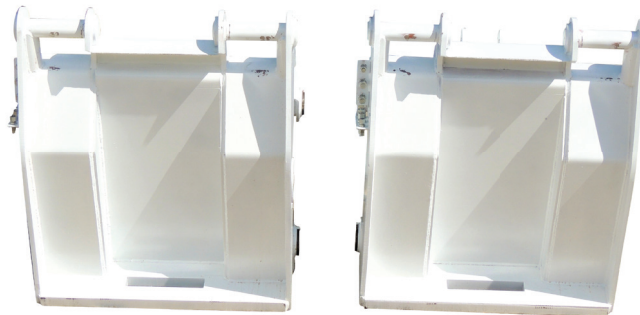
TECHNICAL DATA - LOAD DIAGRAM



ADD THE RWJ SERIES 6 TON JIB & ONE HAS A DETACHABLE, MOVEABLE ARTICULATED LIFTING DEVICE SUITED FOR ALL YOUR NEEDS.



EASY HOOK UP TO SANDVIK ED7 & ED10.



This unit has been designed and manufactured for ergonomically safe material handling. Manufactured to a safety ratio of 2.4:1 which exceeds the internationally acceptable standard of 1.4:1.

